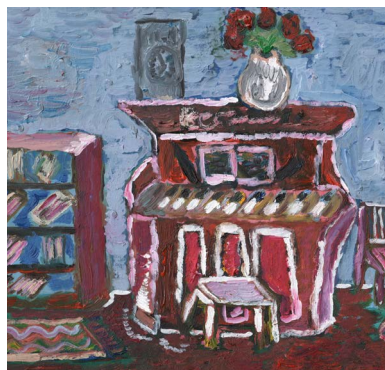
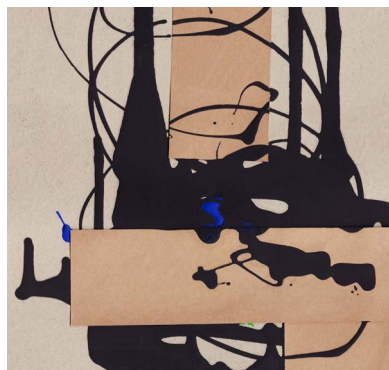
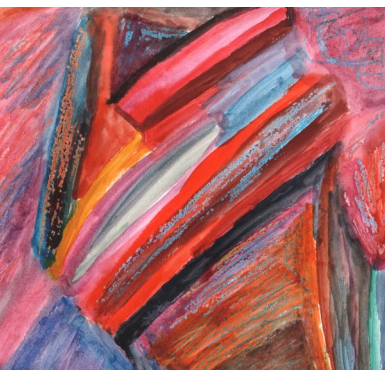
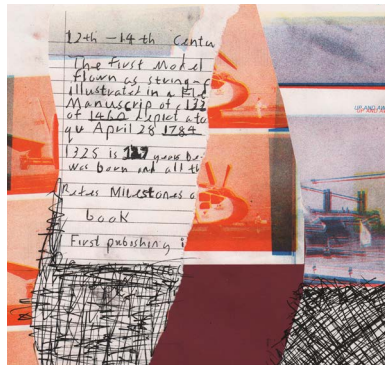
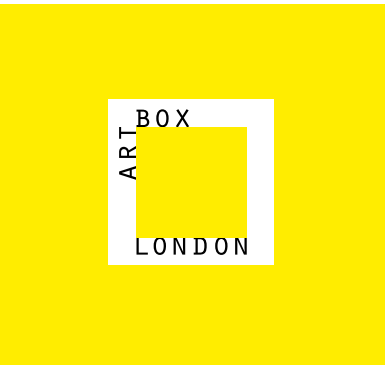




ARTBOX LONDON



Partnerships & Sponsorship




[@artboxlondon.org](https://www.artboxlondon.org)
 Registered charity: 1172529

ART BOX

WHAT IS ARTBOX LONDON?

We are a registered charity and social enterprise that runs art workshops, trips to galleries, puts on exhibitions and creates sales opportunities for people with learning disabilities and autism.

The artists take a share of the profits made from selling their art, while the rest of the money is reinvested in our organisation, funding the work that we do.



LONDON

ART
BOX



LONDON

WHAT WE DO?

WORKSHOPS

In our workshops our artists create striking original artworks supported by our team of art tutors, volunteers, and each other. In these sessions the studio is abuzz with creativity and conversation as our artists paint, draw, print, sculpt and make friends.

EXHIBITIONS

We curate and display our artists work for exhibitions in art galleries and in our studio. Our exhibitions bring art made by people with learning disabilities and autism into the mainstream, changing attitudes about what they can achieve.

TRIPS

Regular visits to galleries and museums inspire the artists and help them develop new ideas, as well as encouraging them to become more confident and independent in using public transport and getting around Central London.

WHAT ARE OUR AIMS?

Toyin wasn't in education, employment or training but developed new skills at Artbox by helping to sell art and teaching art to small groups. She has since gained paid employment and continues to come to Artbox at the weekend to develop her art. Examples of her work are on the right-hand side of the page.



- **To improve the confidence and self-esteem of people with learning disabilities and autism.** Our workshops help to develop our artists creative and life skills and provide opportunities for them to make and meet friends, reducing isolation and loneliness.

- **To develop positive identities for and raise the aspirations of adults with learning disabilities and autism** by providing opportunities for our artists to create, exhibit and sell their art.

- **To raise the visibility of people with learning disabilities and autism in our community and in the wider art world,** improving attitudes towards this group.

1.5 million people in the UK have learning disabilities. They face many challenges and obstacles to full inclusion and integration within society. Only 7% are in paid employment and often have few reasons to leave the house. It can be difficult for adults with learning disabilities to make friends and have contact with non-disabled peers.

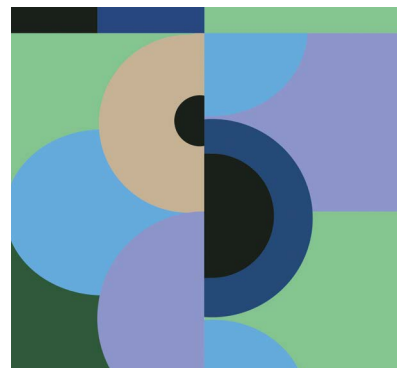


WHY PARTNER WITH US?

Artbox London receives no statutory funding and is 100% reliant on grants and donations to maintain and grow its service. We want to do more – and we need your help to do it!

We work with people with learning disabilities and autism in our Islington studio from across London. This has been possible thanks to our incredibly dedicated volunteers, supporters, fundraisers and corporate partners. We are eager to work in partnership with companies who are in a position to consider Artbox London as their Charity Of the Year, commercial partner, the beneficiary of corporate donations or employee and customer fundraising and/or are interested in speaking with us about sharing expertise and cause related marketing.

We have a track record of developing successful partnerships with companies across a range of sectors and we are proud of the strong relationships we have developed and maintained with so many wonderful companies. Please email Georgina at georgina@artboxlondon.org



DONATIONS & FUNDRAISING

We love receiving donations! Monetary donations enable us to continue running more workshops, outreach sessions, exhibitions and gallery visits as well as creating new opportunities for people with learning disabilities and autism (PLDA).

£45 would help us deliver an outreach session to an artist who is unable to come into the studio due to illness or mental health issues.

£70 would enable us to deliver 1:1 sessions in the studio for PLDA who have additional needs.

£125 would contribute to delivering a half-day workshop.

£6,000 would contribute to the costs of providing art materials for a year.

£15,000 would contribute to our annual rental costs for the studio.

If you would like to discuss Artbox London's ambitious plans for the future and how you might be able to support us, please contact Georgina at: georgina@artboxlondon.org



DIFFERENT WAYS TO PARTNER WITH ARTBOX LONDON

Over the last few years Artbox London has collaborated with and been supported by some fantastic businesses, such as Lush, The Hoxton Hotel, Facebook, Bank of America, Merrill Lynch, The British Library, ColArt, Lloyds, Fold Gallery, House of Illustration, Real Group, Marks and Spencer, Attic Self Storage, Mazars and Say Media.

We've been creating flexible volunteering opportunities since 2020, enabling corporate groups to make big impacts locally.

■ **CORPORATE VOLUNTEERING** We can organise projects tailored to your teams which can make a impact on our community creating a lasting relationship. Do you want to support us on a visit to a gallery and museum with our artists?

■ **TEAM BUILDING WORKSHOPS** If you want to organise something fun and memorable for your team, you can make a massive difference to our artists by hosting an art workshop either at your premises or in the Artbox studio. These workshops are led by our artists, meaning that they get to develop their skills, while you get to learn new art techniques.

Photos from the top: Redstone commission for tea towels to send out to clients as gifts; Facebook commission for a Valentine's card; commission from a medical practice in Wimpole Street.



- **HOST AN EXHIBITION AT YOUR PREMISES OR A GALLERY** We'll provide artwork and you and your team can help Artbox to curate, hang, market and sell artwork.
- **SPONSOR AN EVENT**
- **SELL OUR PRODUCTS** There are lots of amazing prints and products such as packs of printed notebooks, tote bags and greeting cards that you can sell in your shop. We have beautifully designed stationery and gifts for your employees and clients. We can work with you to design a product that contains your logo and company information.
- **ARTWORK LICENSING**
- **BUY OR COMMISSION ART**
- **SUPPLY EXHIBITION OR WORKSHOP SPACE**
- **VOLUNTEER YOUR TIME & SKILLS**
- **PROVIDE ART MATERIALS**



Photos from top: Riso notebooks using illustrations by Artbox London artists; exhibition at the Cello Factory in Waterloo; Apple workshop.

ART LICENSING

The work of our artists looks great on a range of products including greetings cards, book covers, clothing and websites. If you're interested in licensing one of the images, or commissioning an artist to create a specific design, please email: madeline@artboxlondon.org

LUSH

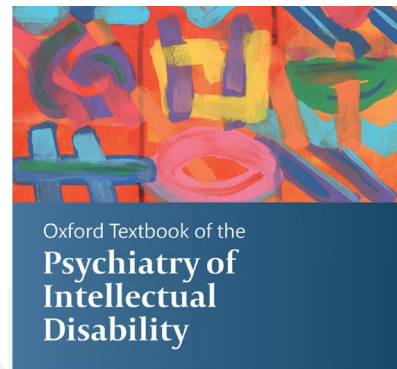
Giulia's crab illustration, created during the first lockdown of 2020, was chosen by Lush to feature on 25,000 of their knot wraps.

BRITISH JOURNAL OF PSYCHIATRY

At the beginning of 2021, Bobbi's giraffe illustration was used on the front cover of their quarterly British Journal of Psychiatry which is sent out to 15,000 members monthly.

OXFORD UNIVERSITY PRESS

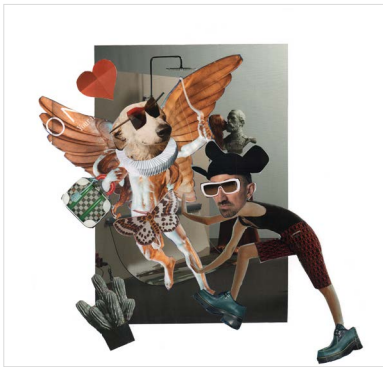
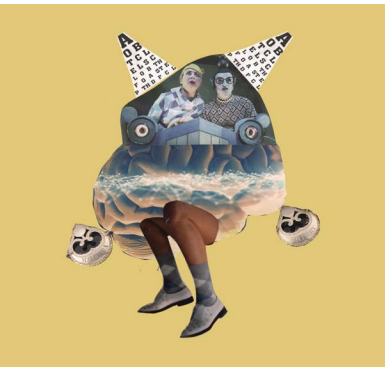
Oxford University Press purchased the rights to reproduce a work by artist Lee to use on the print and digital cover of their new publication - Oxford Textbook of the Psychiatry of Intellectual Disability by Sabyasachi Bhaumik & Regi Alexander.



BUY OR COMMISSION ART

We've got so much art that can brighten up office and meeting spaces, reception areas, hotel rooms and cafés and we can provide an affordable framing service.

We have worked with corporate and retail organisations to deliver artworks to support the interiors and products. Our partners have included Lush and many others. In 2020 Artbox worked with a team of designers at The Hoxton Hotel Holborn to frame and hang 64 fun and quirky artworks by Ashley that can now be seen on the bedroom walls of this cool central London designer hotel.



WHAT'S NEXT? FUTURE GOALS

Since our beginnings in 2011, we have grown a lot and been able to extend our support to more people each year. Our growth has in part been facilitated by business partnerships and corporate support which have played an unprecedented role in our ability to raise awareness around the causes we value.

Contact georgina@artboxlondon.org to hear more about what we are doing and how you can be a part of it.



TESTIMONIALS

“CREATING ART MAKES ME FEEL COMFORTABLE AND CALM – IT’S ONE OF MY CALMING STRATEGIES FROM WHEN I AM FEELING STRESSED. IT ALSO HELPS ME MAKE FRIENDS WITH PEOPLE AND KEEP IN TOUCH WITH MY FRIENDS”

Christopher, Artbox London Artist

“WHEN I’M DOING MY ARTWORK, IT’S MAKING ME FEEL MORE CONFIDENT AND IT’S A WHOLE NEW LIFE JOURNEY AHEAD FOR ME”

Hisba, Artbox London Artist

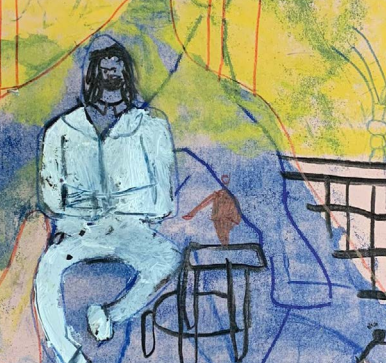
“THE ARTBOX STUDIO IS ULTIMATELY AMAZING, I MAKE A LOT OF FRIENDS AND WE SHARE SOME IDEAS. IF THEY HAVE THE SAME DISABILITY AS YOU OR ARE A BIT DIFFERENT, YOU CAN TALK ABOUT IT IF YOU LIKE... YOU NEED TO HAVE SOME POSITIVE THINGS IN YOUR LIFE”

Toyin, Artbox London Artist



Click [here](#) to see Shruti’s video.

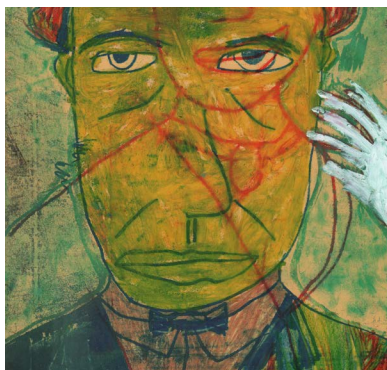
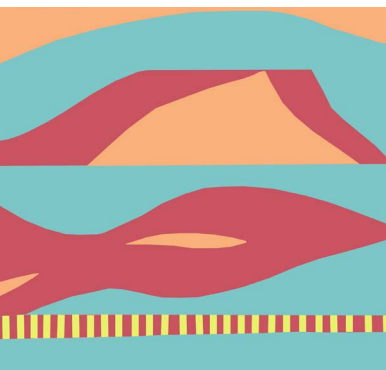
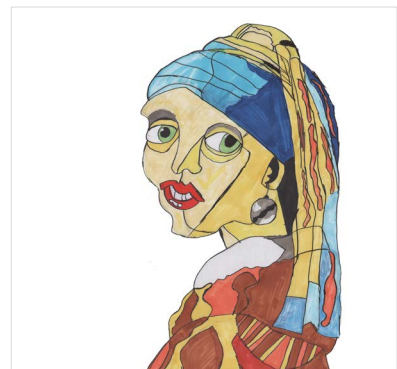
We are proud to see the impact our artists, volunteers, and sponsors experience from their involvement with Artbox London.



ART BOX
LONDON



**GET IN
TOUCH &
HELP US
GROW!**



GEORGINA GEORGE-SCOTT
Director
E: georgina@artboxlondon.org
W: www.artboxlondon.org